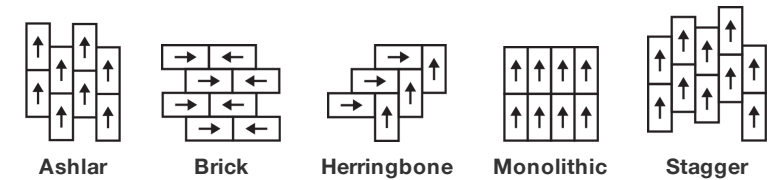


Ornate Tile

Type De Produit	Dalles De Moquette	
Collection	Modern Edit	
Numéro Du Style	5T166	
Construction	Tufté Bouclé Rasé Structuré à Motif	
Fibre	Ecosolution Q100™ Nylon	
Sous-couche Primaire	Synthétique	
Sous-couche Secondaire	Dalle Ecoworx®	
Traitements Protecteurs	SSP® Shaw Protection Du Sol	
Adhésif Recommandé	LokDots, 3000 Carpet Tile 1 Gallon, 4151 Multi-Use Carpet Tile 4 Gallon, 5000 Carpet Tile 1 Gallon, LokWorx Adhesive Tabs, 3800 Indoor Outdoor Carpet Tile 4 Gallon, 5000 Carpet Tile 4 Gallon or 3000 Carpet Tile 4 Gallon	
	u.s.	metric
Dimensions Du Produit	18 in x 36 in	46 cm x 91 cm
Surface Par Carton	45 ft²	4.18 m²
Pièces Par Carton	10 pcs	
Jauge	1/12 in	47.2 per 10 cm
Points	9.5 per in	38.0 per 10 cm
Densité Moyenne	9638 oz/yd³	0.357 g/cm³
Kilotex		20.85
Epaisseur Du Velours	0.334 in	8.48 mm
Poids Tufté	34 oz/yd²	1152.8 g/m²



Méthodes d'Installation Conseillées



Données + Tests Et Essai

Panneau Rayonnant (Astm E648)	Class I
Nbs Smoke	Less Than 450
Propension Électrostatique	Less Than 3.5 kv
Label Cri Green Label Plus (Glp)	GLP5563
Test d'Inflammabilité	Pass*
Ada Compliance	>0.6, Meets the recommended static coefficient of friction for ADA walking surfaces and accessible routes***

Test Reports may be included or listed by the manufacturing/inventory style number as opposed to the noted selling style number.

Garanties

Durée De Vie Commerciale Limitée

Coordination Des Produits

Carpet Tile: **Rethread Tile**
Broadloom: **Edition, Inherit**

Attributs + Certifications

Certifications Below Apply Exclusively To The Carpet Tile Rug Itself And Not The Lokworx Tabs Adhesive

Certification Cradle to Cradle™ (C2C)
Déclaration sanitaire de produit (HPD)
Déclaration environnementale de produit (EPD)

Embodied Carbon (Cradle to Gate)
Life-Cycle Carbon Emissions
Living Building Challenge (LBC)
Déclarer
NSF 140
CRI Green Label Plus (GLP)
Singapore Green Label
Label CE (EN 14041)
garantie environnementale

contenu recyclé total
emballage du produit
pays d'origine

Silver Level (Version 4.0)
Transparence 1 000 ppm
Certifié Par Un Organisme Tiers Conformément Aux Normes ISO14044, ISO 14025 & EN15804
5.59 kg CO₂/m²
Carbon Neutral
Free of Red List Chemicals
LBC Compliant
or
GLP5563
Certifié
Certifié Par Un Organisme Tiers
Re[turn] Reclamation Program* | Through Our Environmental Guarantee, Shaw Pledges to Transport And Recycle Any Ecoworx Carpet.
65% (Pre-Consumer 65% | Post-Consumer 0%)
100% Recyclable
USA

Contribution À La Certification Leed

MR Credit: Building Product Disclosure and Optimisation
Environmental Product Declarations - Option 1: Environmental Product Declaration (EPD)
MR Credit: Building Product Disclosure and Optimisation
Material Ingredients - Option 1: Material Ingredient Reporting
MR Credit: Building Product Disclosure and Optimisation
Material Ingredients - Option 2: Material Ingredient Optimization
MR Credit: Building Product Disclosure and Optimization
Sourcing of Raw Materials - Option 2: Leadership Extraction Practices
"Crédit EQ : matériaux faibles émissions
Option 1 : calculs par catégorie de produit"
MR Credit: Interiors Life-Cycle Impact Reduction
Option 3: Design for Flexibility

3rd Party Certified in Accordance with ISO14044, ISO14025 & EN15804

HPD (Version 2.1) or C2C Silver Level (Version 4.0)

C2C Silver Level (Version 4.0)

Environmental Guarantee: Re[turn] Reclamation Program* | Through Our Environmental Guarantee, Shaw Pledges to Transport And Recycle Any Ecoworx Carpet.
Certified

Ecoworx Tile with Lokdots Installation System

Indice De Réflexion Lumineuse



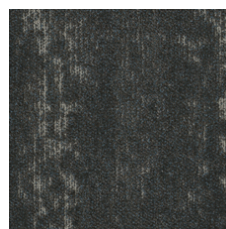
Ivory 64144
LRV 20.6



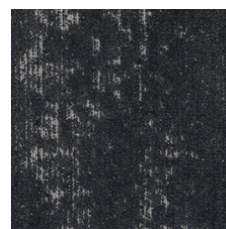
Apricot Ivory 64145
LRV 19.8



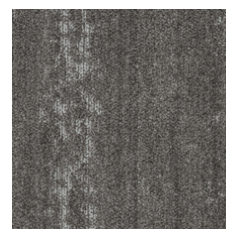
Ochre 64155
LRV 14.6



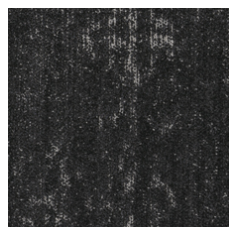
Heritage Blue 64481
LRV 4.4



Indigo 64496
LRV 2.9



Antique 64504
LRV 13.1



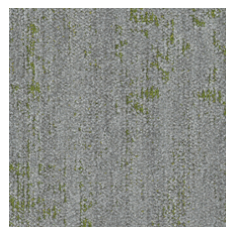
Eternal 64505
LRV 2.5



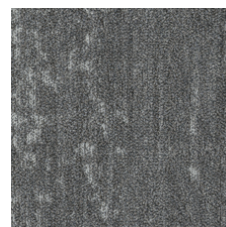
Eternal Cobalt 64506
LRV 2.3



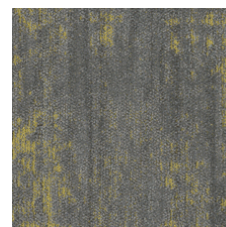
Glass 64515
LRV 22.6



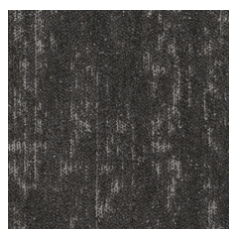
Green Glass 64516
LRV 20.3



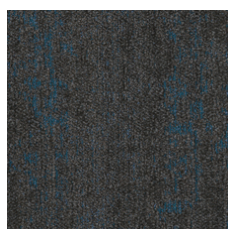
Grey Slate 64535
LRV 15.3



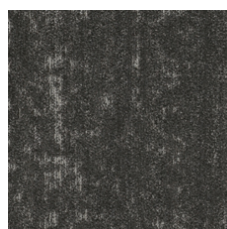
Yellow Slate 64536
LRV 13.5



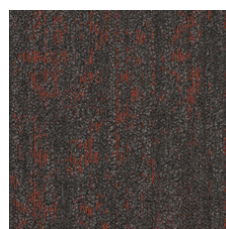
Vintage Grey 64595
LRV 5.8



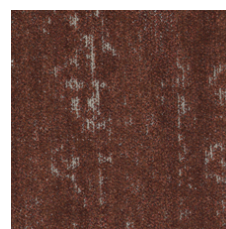
Vintage Teal 64596
LRV 4.7



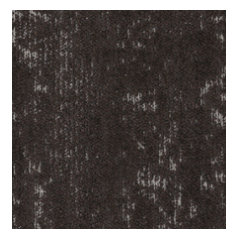
Hearth 64760
LRV 5.9



Coral Hearth 64761
LRV 4.9



Umber 64855
LRV 4.7



Brocade 64911
LRV 4.5

Informations Supplémentaires

* To learn more about the recyclability of our products and our re[TURN], please visit shawcontract.com/sustainability.

**Meets or exceeds all local and national regulations in country of manufacture.

***This carpet is manufactured to be ADA compliant, but to be fully ADA compliant, the end-user must ensure the carpet is adhered to the floor and installed as outlined in the ADA standards.

[Installation Guidelines](#)

[Maintenance Guidelines](#)

Specifications are subject to nominal manufacturing variance. Material supply and/or manufacturing processes may necessitate changes without notice.

This product is an exclusive design and may not be duplicated in any manner. Use of this design in the creation of another product design is also strictly prohibited.

Visit shawcontract.com/testing for more information.



PVC-Free

Corporate Headquarters +1 800 257 7429 | +1 706 532 7984 | Atlanta +1 404 853 7429 | Bengaluru +91 80 6773 0202 | Beijing +86 10 6568 588 | Chicago +1 312 467 1331 | Dubai +971 4 584 6956 | Hong Kong +852 2623 0371 | Latin America (Miami) +1 305 827 5912 | London +44 207 961 4120 | Los Angeles +1 800 233 1614 | Melbourne +61 3 9939 8543 | Mexico City +55 5010 7600 | Mumbai +91 22 6284 5050 | Nantong +86 400 800 7429 | New York +1 212 953 7429 | Paris +33 (0) 1 81 22 44 39 | San Francisco +1 415 955 1920 | Santiago +562 2431 5000 x 550 | São Paulo +55 11 3071 1702 | Shanghai +86 21 3338 4000 | Singapore +65 6733 1811 | Sydney +1 800 556 302

© 2024 Shaw Industries Group, Inc., a Berkshire Hathaway Company
May 16, 2024

3 of 3